

# Key Largo Wastewater Treatment District Board of Commissioners Meeting Agenda Item Summary

Meeting Date:  
June 2, 2026

Agenda Item Number: L-1

Action Required:  
No

Department:  
Plant/Facilities

Sponsor:  
Ryan Dempsey

Subject:  
**Plant/Facilities Report - April 2026**

Summary:  
Mr. Dempsey will present the Plant/Facilities monthly report.

Reviewed / Approved

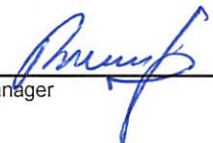
Financial Impact

Attachments

Operations: \_\_\_\_\_  
Administration: \_\_\_\_\_  
Finance: \_\_\_\_\_  
District Counsel: \_\_\_\_\_  
District Clerk: \_\_\_\_\_  
Engineering: \_\_\_\_\_

\$  
  
Funding Source:  
N/A  
  
Budgeted:  
N/A

1. Monthly Report

Approved By:  Date: 5-28-26  
General Manager

# Wastewater Treatment Plant Operations

The wastewater treatment plant processed an average of 2.06 million gallons of influent per day (MGD). The Treatment Plant remains in compliance with the Florida Department of Environmental Protection (FDEP) guidelines.

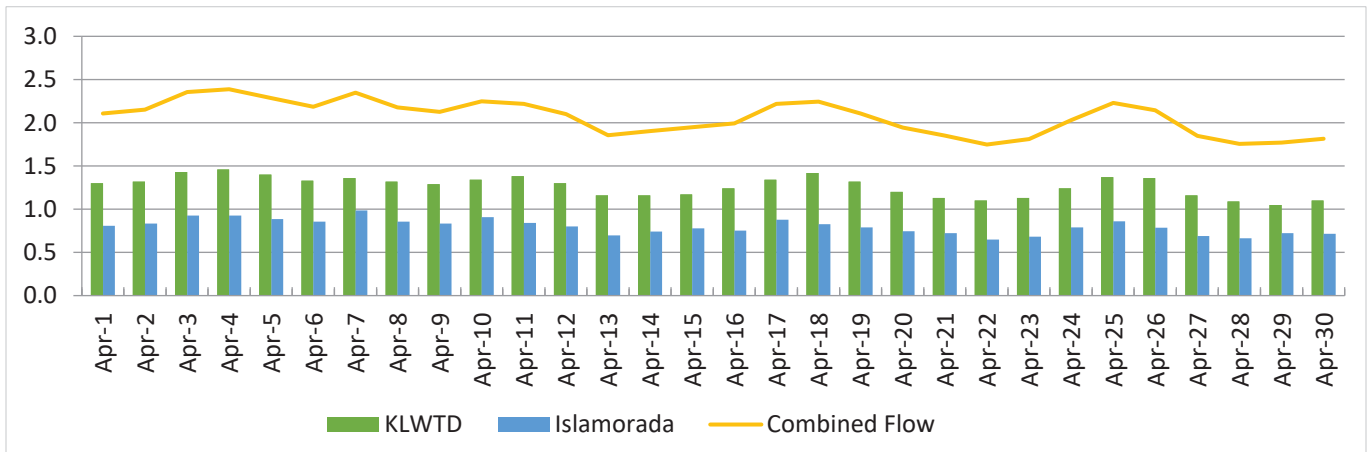
## Effluent Quality Reports (mg/L)

Determines the quality of discharge from the wastewater treatment plant.

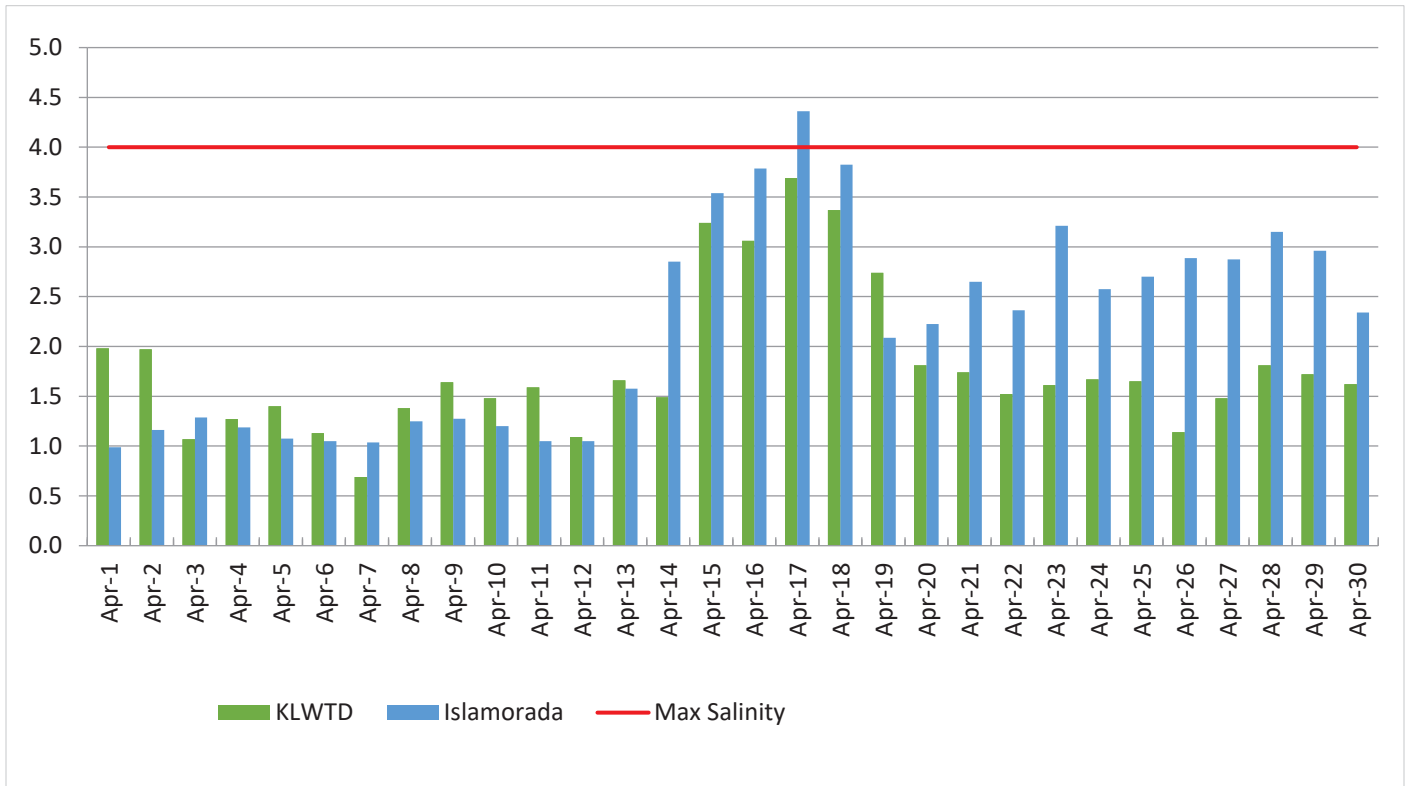
Effluent Quality Report	April 2026 Plant Performance	12 Month Average Plant Performance	Effluent Limits
<b>CBOD5</b> (Carbonaceous Biochemical Oxygen Demand)	1.6	2.3	5
<b>TSS</b> (Total Suspended Solids)	1.1	1.1	5
<b>TN</b> (Total Nitrogen)	5.5	3.8	Report only
<b>TP</b> (Total Phosphorous)	.7	.7	Report only

## Daily Flow (MGD)

The total flow of influent through the wastewater treatment plant each day.



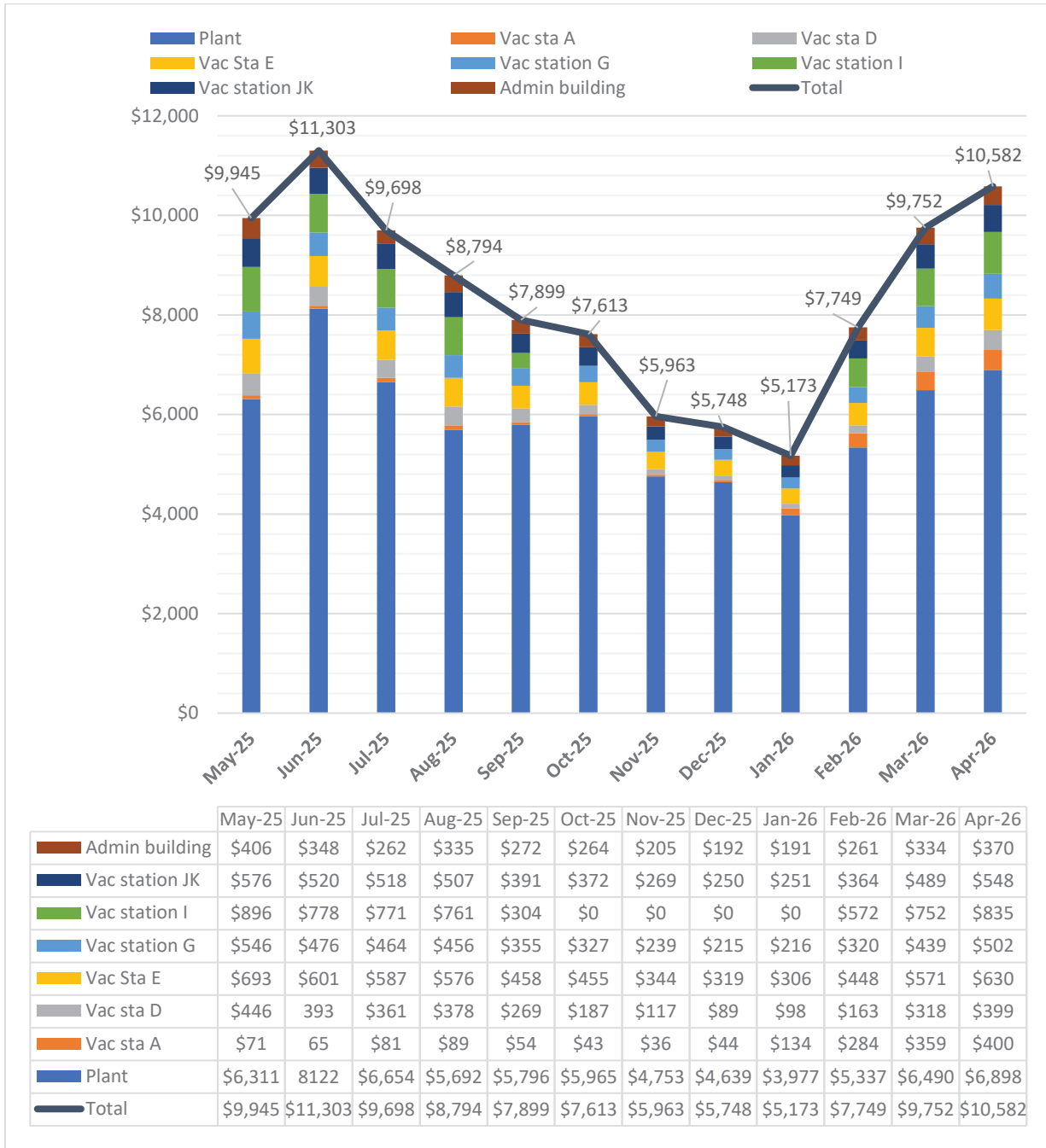
**Daily Peak Salinity (PPT)**  
The daily peak salinity for the current month.



**Islamorada**

Average Daily Flow: .798 MGD  
 Highest Daily Flow: .987 MGD  
 Monthly Peak Salinity: 4.36 PPT  
 Days over 4.0 PPT Salinity: 1  
 3-month average of Islamorada flow capacity (1.104 MGD): 74%

## Solar Production Report



**12 month production estimate for all sites: \$100,219**

## Vacuum station vac pump inlet filter and piping upgrade



## Maintenance shop storage lean-to



## Booster pump #2 repair



## Glycerin pump system rehab



