

# Key Largo Wastewater Treatment District Board of Commissioners Meeting Agenda Item Summary

Meeting Date:  
April 21, 2026

Agenda Item Number: M-1

Action Required:  
No

Department:  
Plant/Facilities

Sponsor:  
Ryan Dempsey

Subject:  
**Plant/Facilities Report - March 2026**

Summary:  
Mr. Dempsey will present the Plant/Facilities monthly report.

**Reviewed / Approved**

**Financial Impact**

**Attachments**

Operations: \_\_\_\_\_  
Administration: \_\_\_\_\_  
Finance: \_\_\_\_\_  
District Counsel: \_\_\_\_\_  
District Clerk: \_\_\_\_\_  
Engineering: \_\_\_\_\_

\$  
  
Funding Source:  
N/A  
  
Budgeted:  
N/A

1. Monthly Report

Approved By:  Date: 04/16/2026  
General Manager

# Wastewater Treatment Plant Operations

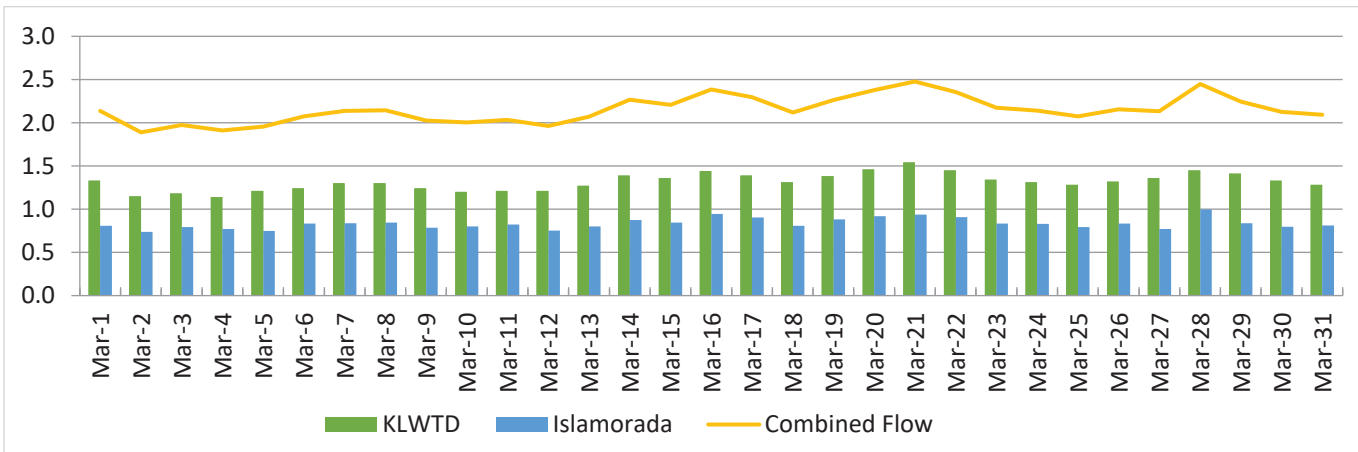
The wastewater treatment plant processed an average of 2.15 million gallons of influent per day (MGD). The Treatment Plant remains in compliance with the Florida Department of Environmental Protection (FDEP) guidelines.

## Effluent Quality Reports (mg/L)

Determines the quality of discharge from the wastewater treatment plant.

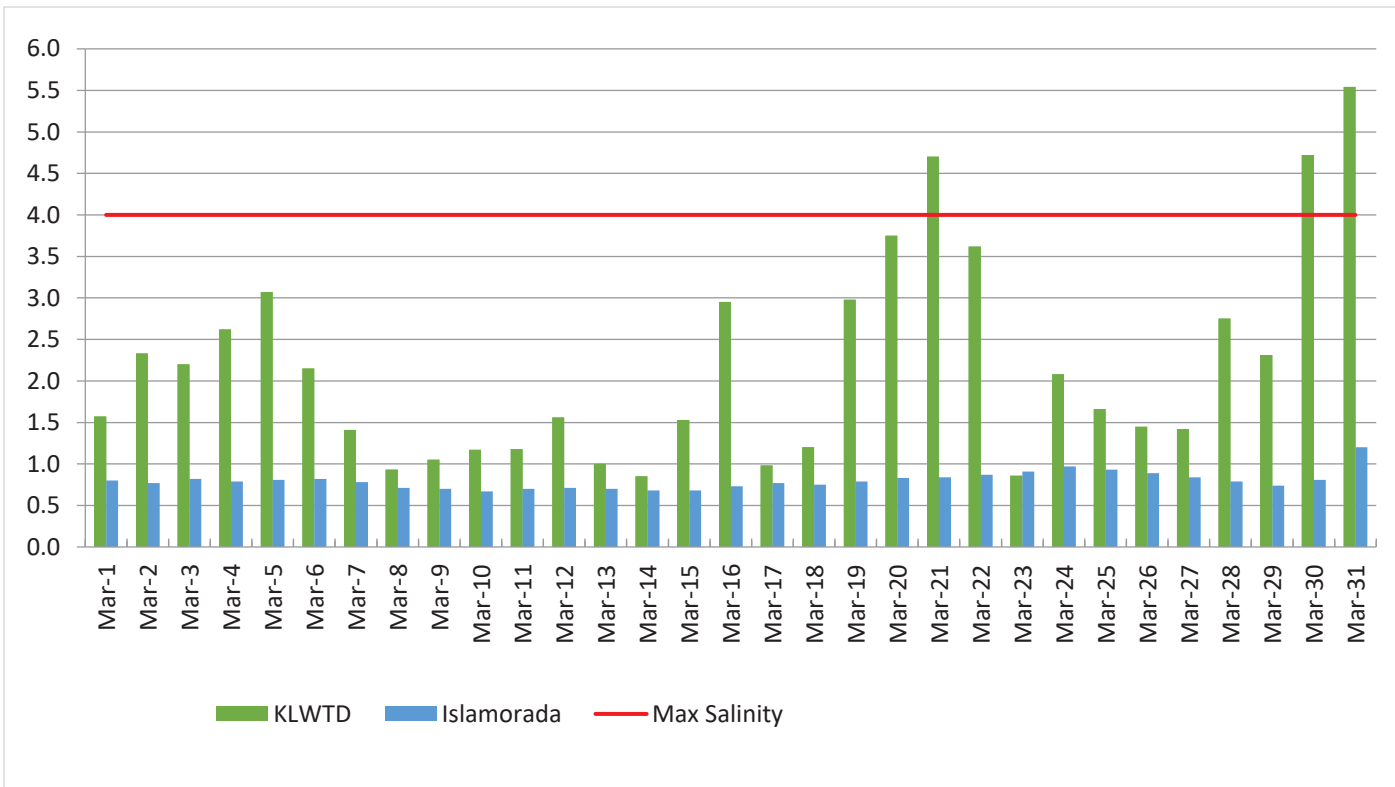
Daily (MGD) The total influent the	Effluent Quality Report	March 2026 Plant Performance	12 Month Average Plant Performance	Effluent Limits	Flow flow of through
	<b>CBOD5 (Carbonaceous Biochemical Oxygen Demand)</b>	1.6	2.2	5	
	<b>TSS (Total Suspended Solids)</b>	1.1	1.1	5	
	<b>TN (Total Nitrogen)</b>	4.5	3.7	Report only	
	<b>TP (Total Phosphorous)</b>	1.1	.8	Report only	

wastewater treatment plant each day.



### Daily Peak Salinity (PPT)

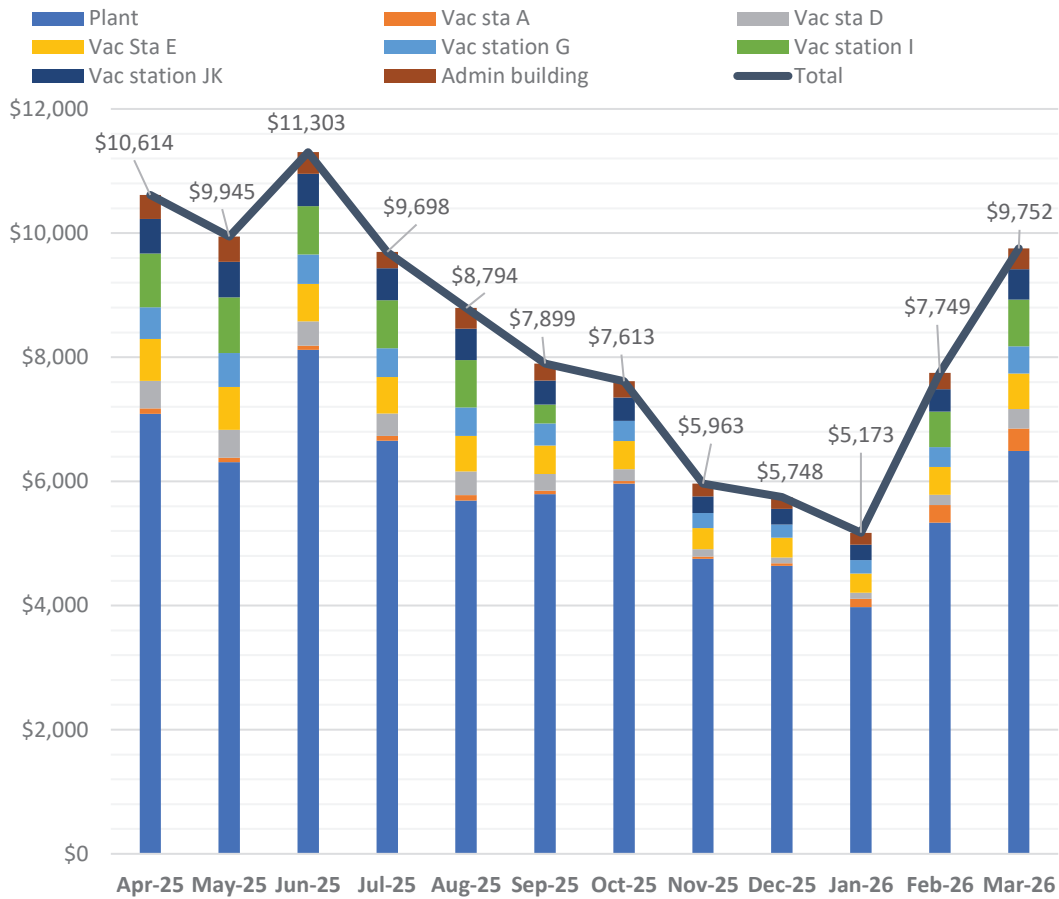
The daily peak salinity for the current month.



### Islamorada

Average Daily Flow: .834 MGD  
 Highest Daily Flow: .998 MGD  
 Monthly Peak Salinity: 1.2 PPT  
 Days over 4.0 PPT Salinity: 0  
 3-month average of Islamorada flow capacity (1.104 MGD): 69%

## Solar Production Report



	Apr-25	May-25	Jun-25	Jul-25	Aug-25	Sep-25	Oct-25	Nov-25	Dec-25	Jan-26	Feb-26	Mar-26
Admin building	\$388	\$406	\$348	\$262	\$335	\$272	\$264	\$205	\$192	\$191	\$261	\$334
Vac station JK	\$557	\$576	\$520	\$518	\$507	\$391	\$372	\$269	\$250	\$251	\$364	\$489
Vac station I	\$863	\$896	\$778	\$771	\$761	\$304	\$0	\$0	\$0	\$0	\$572	\$752
Vac station G	\$511	\$546	\$476	\$464	\$456	\$355	\$327	\$239	\$215	\$216	\$320	\$439
Vac Sta E	\$674	\$693	\$601	\$587	\$576	\$458	\$455	\$344	\$319	\$306	\$448	\$571
Vac sta D	\$444	\$446	393	\$361	\$378	\$269	\$187	\$117	\$89	\$98	\$163	\$318
Vac sta A	\$87	\$71	65	\$81	\$89	\$54	\$43	\$36	\$44	\$134	\$284	\$359
Plant	\$7,090	\$6,311	8122	\$6,654	\$5,692	\$5,796	\$5,965	\$4,753	\$4,639	\$3,977	\$5,337	\$6,490
Total	\$10,614	\$9,945	\$11,303	\$9,698	\$8,794	\$7,899	\$7,613	\$5,963	\$5,748	\$5,173	\$7,749	\$9,752

**12 month production estimate for all sites: \$100,251**

## CL17 chlorine analyzer upgrade



## Plant 8" fire main Backflow assembly replacement





## Headworks channel cleaning and auger brush maintenance

