

Key Largo Wastewater Treatment District  
Board of Commissioners Meeting  
Agenda Item Summary

Meeting Date:  
February 3, 2026

Agenda Item Number: L-1

Action Required:  
No

Department: Plant/Facilities      Sponsor: Ryan Dempsey

Subject:  
**Plant/Facilities Report - December 2025**

Summary:  
Mr. Dempsey will present the Plant/Facilities monthly report.

<u>Reviewed / Approved</u>	<u>Financial Impact</u>	<u>Attachments</u>
Operations: _____	\$	1. Monthly Report
Administration: _____		
Finance: _____	Funding Source:	
District Counsel: _____	N/A	
District Clerk: _____	Budgeted:	
Engineering: _____	N/A	

Approved By:  Date: 1-29-26  
General Manager

## Wastewater Treatment Plant Operations

The wastewater treatment plant processed an average of 1.85 million gallons of influent per day (MGD). The Treatment Plant remains in compliance with the Florida Department of Environmental Protection (FDEP) guidelines.

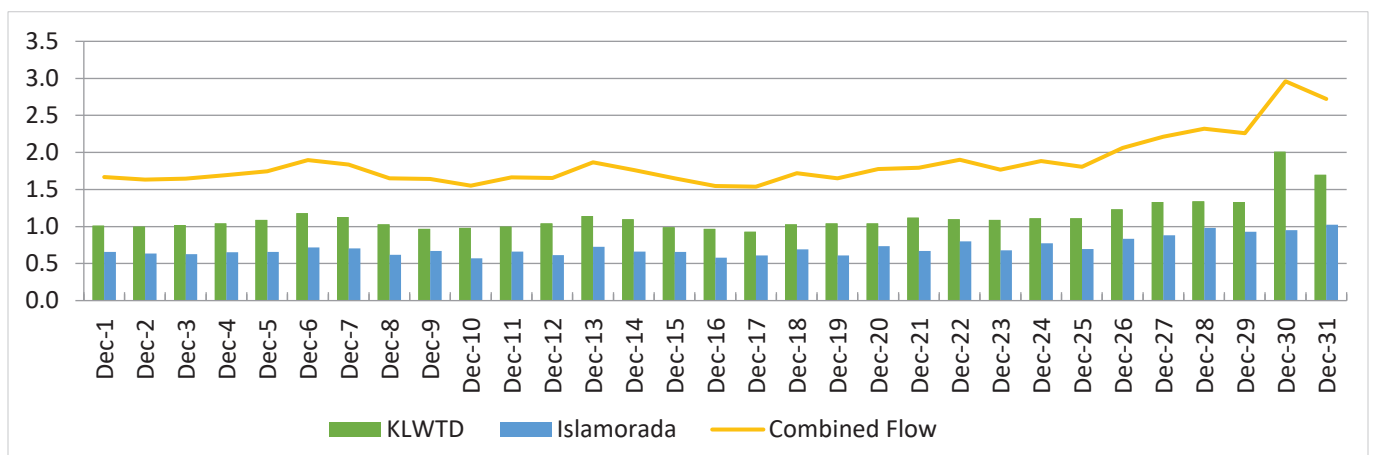
### Effluent Quality Reports (mg/L)

Determines the quality of discharge from the wastewater treatment plant.

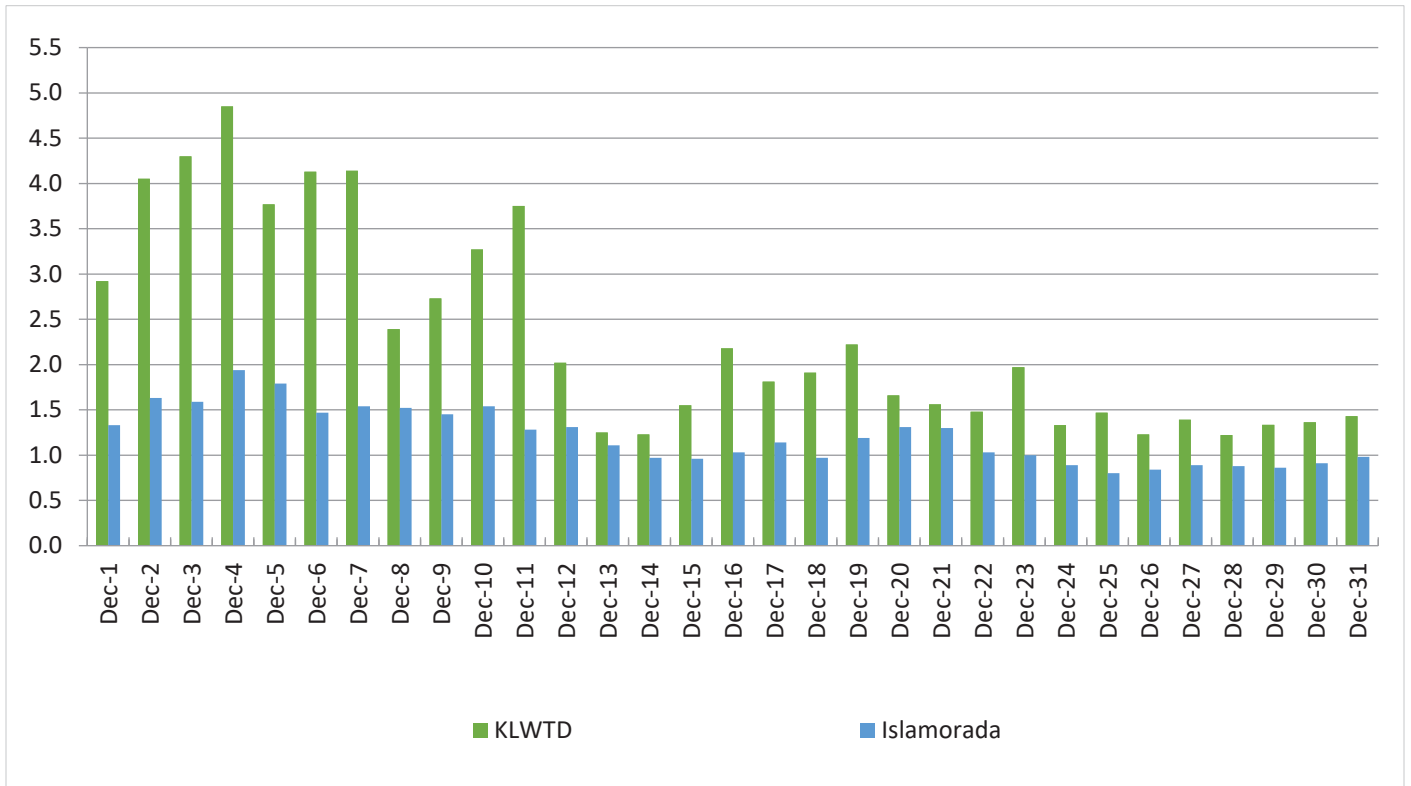
Effluent Quality Report	December 2025 Plant Performance	12 Month Average Plant Performance	Effluent Limits
CBOD5 (Carbonaceous Biochemical Oxygen Demand)	2.7	2.1	5
TSS (Total Suspended Solids)	1	1.1	5
TN (Total Nitrogen)	4.3	3.4	Report only
TP (Total Phosphorous)	.7	.8	Report only

### Daily Flow (MGD)

The total flow of influent through the wastewater treatment plant each day.



**Daily Peak Salinity (PPT)**  
The daily peak salinity for the current month.



### Islamorada

Average Daily Flow: .719 MGD

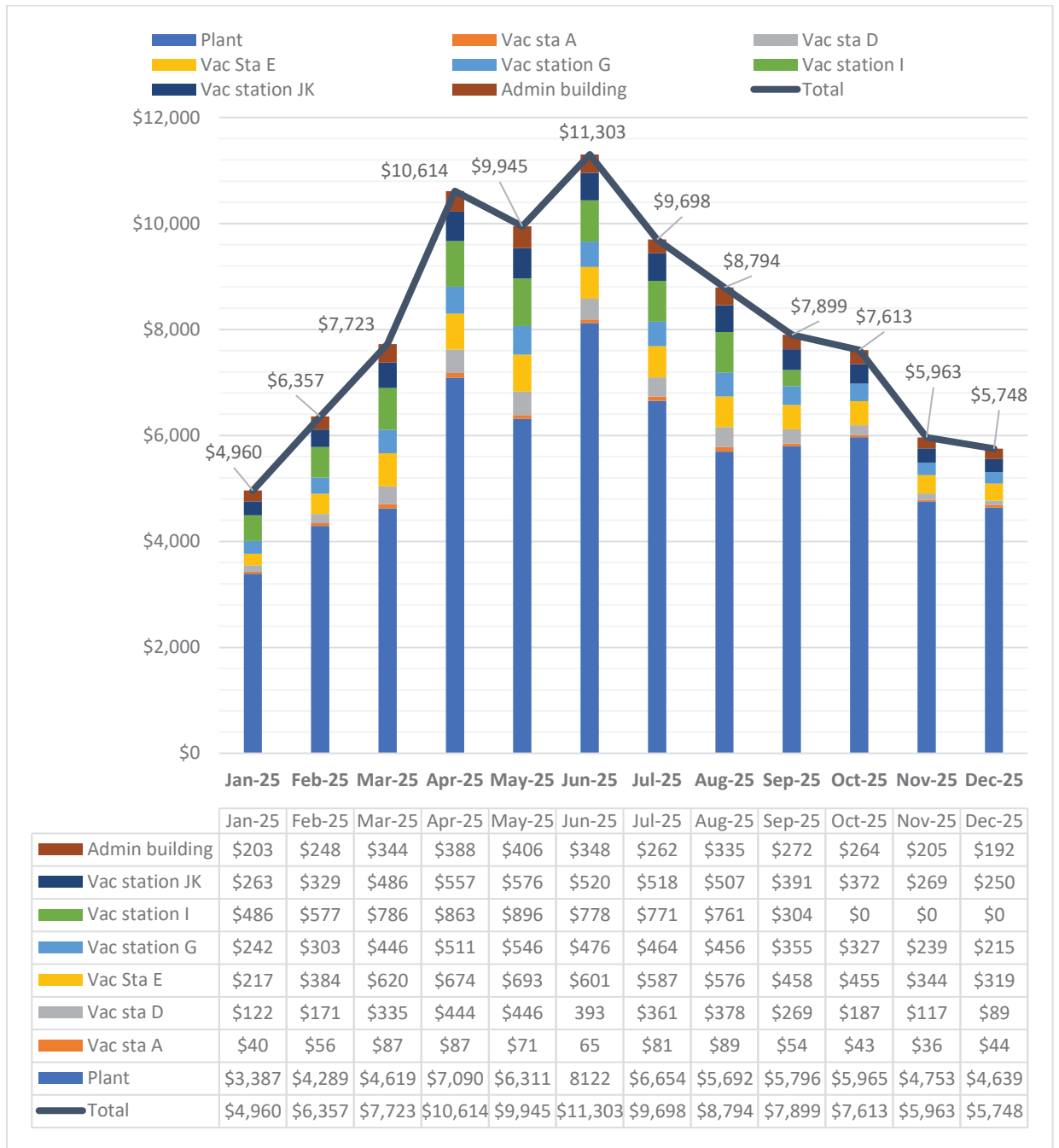
Highest Daily Flow: 1.0 MGD

Monthly Peak Salinity: 1.9 PPT

Days over 4.0 PPT Salinity: 0

3-month average of Islamorada flow capacity (1.104 MGD): 66%

## Solar Production Report



**Total YTD Production estimate for all sites: \$96,617**