

# Key Largo Wastewater Treatment District Board of Commissioners Meeting Agenda Item Summary

Meeting Date:

December 16, 2025

Agenda Item Number: L-1

Action Required:

No

Department:

Plant/Facilities

Sponsor:

Ryan Dempsey

Subject:

**Plant/Facilities Report - October 2025**

Summary:

Mr. Dempsey will present the Plant/Facilities monthly report.

## Reviewed / Approved

Operations: \_\_\_\_\_

Administration: \_\_\_\_\_

Finance: \_\_\_\_\_

District Counsel: \_\_\_\_\_

District Clerk: \_\_\_\_\_

Engineering: \_\_\_\_\_

## Financial Impact

\$

Funding Source:

N/A

Budgeted:

N/A

## Attachments

1. Monthly Report

Approved By: \_\_\_\_\_

General Manager

Date: \_\_\_\_\_

12-11-25

# Wastewater Treatment Plant Operations

The wastewater treatment plant processed an average of 2.25 million gallons of influent per day (MGD). The Treatment Plant remains in compliance with the Florida Department of Environmental Protection (FDEP) guidelines.

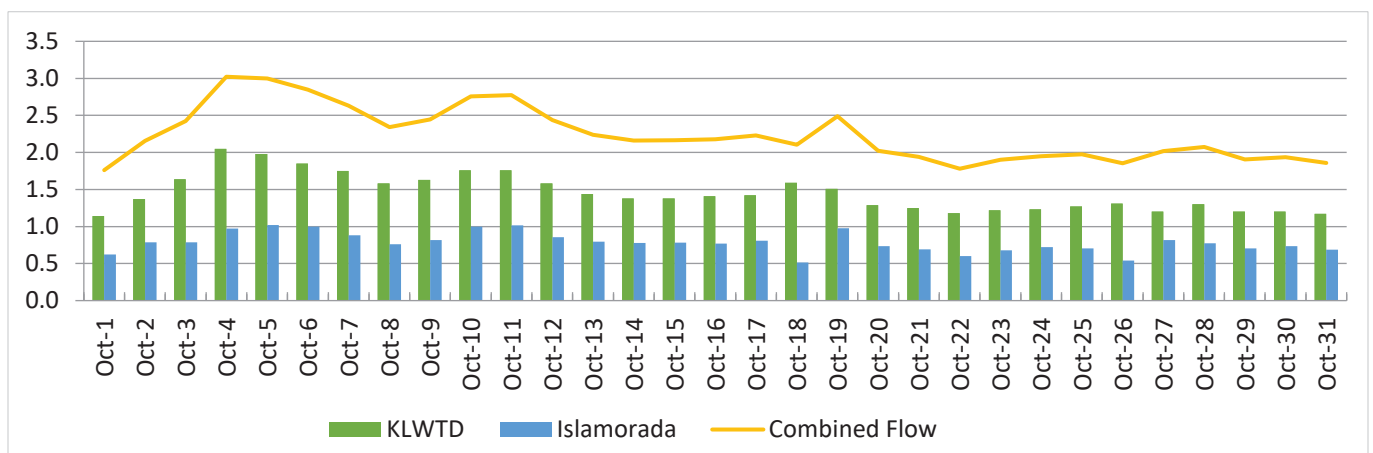
## Effluent Quality Reports (mg/L)

Determines the quality of discharge from the wastewater treatment plant.

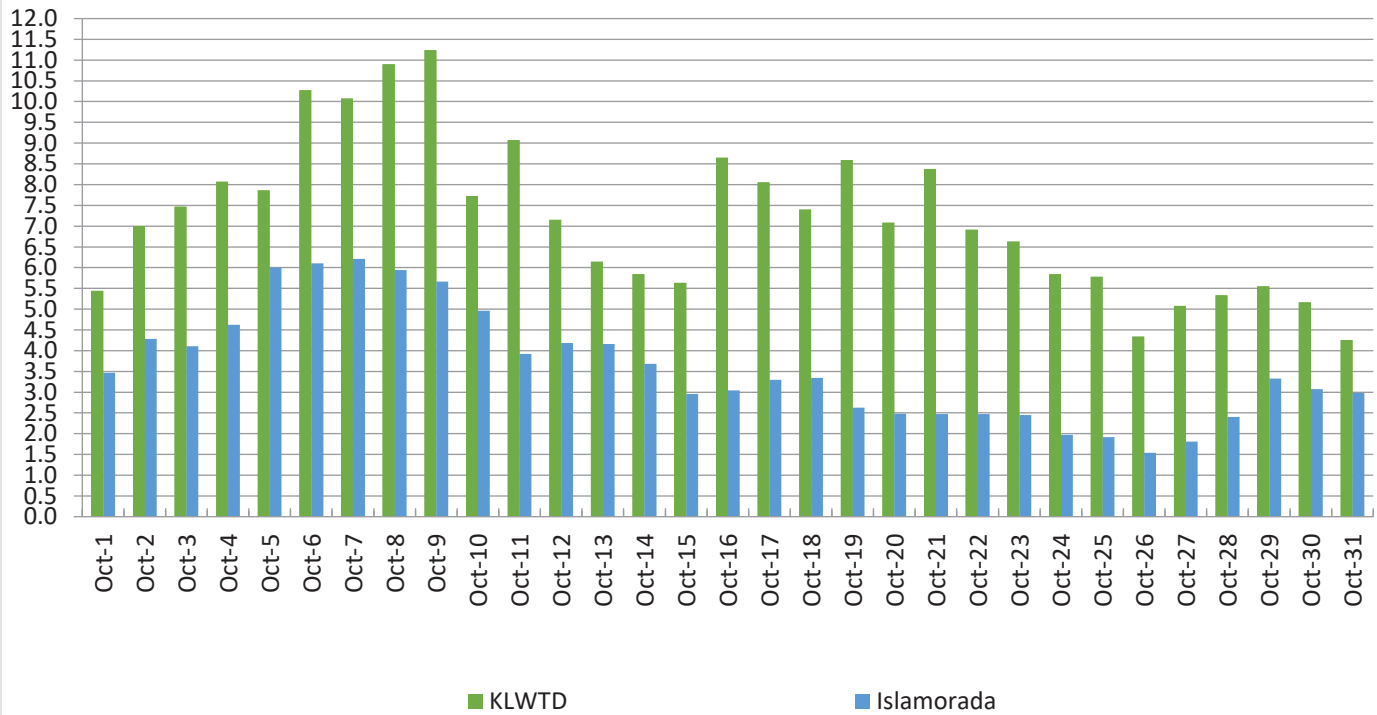
Effluent Quality Report	October 2025 Plant Performance	12 Month Average Plant Performance	Effluent Limits
CBOD5 (Carbonaceous Biochemical Oxygen Demand)	1.8	2.0	5
TSS (Total Suspended Solids)	1.8	1.1	5
TN (Total Nitrogen)	3.6	3.2	Report only
TP (Total Phosphorous)	.5	.8	Report only

## Daily Flow (MGD)

The total flow of influent through the wastewater treatment plant each day.



**Daily Peak Salinity (PPT)**  
The daily peak salinity for the current month.



### Islamorada

Average Daily Flow: .790 MGD

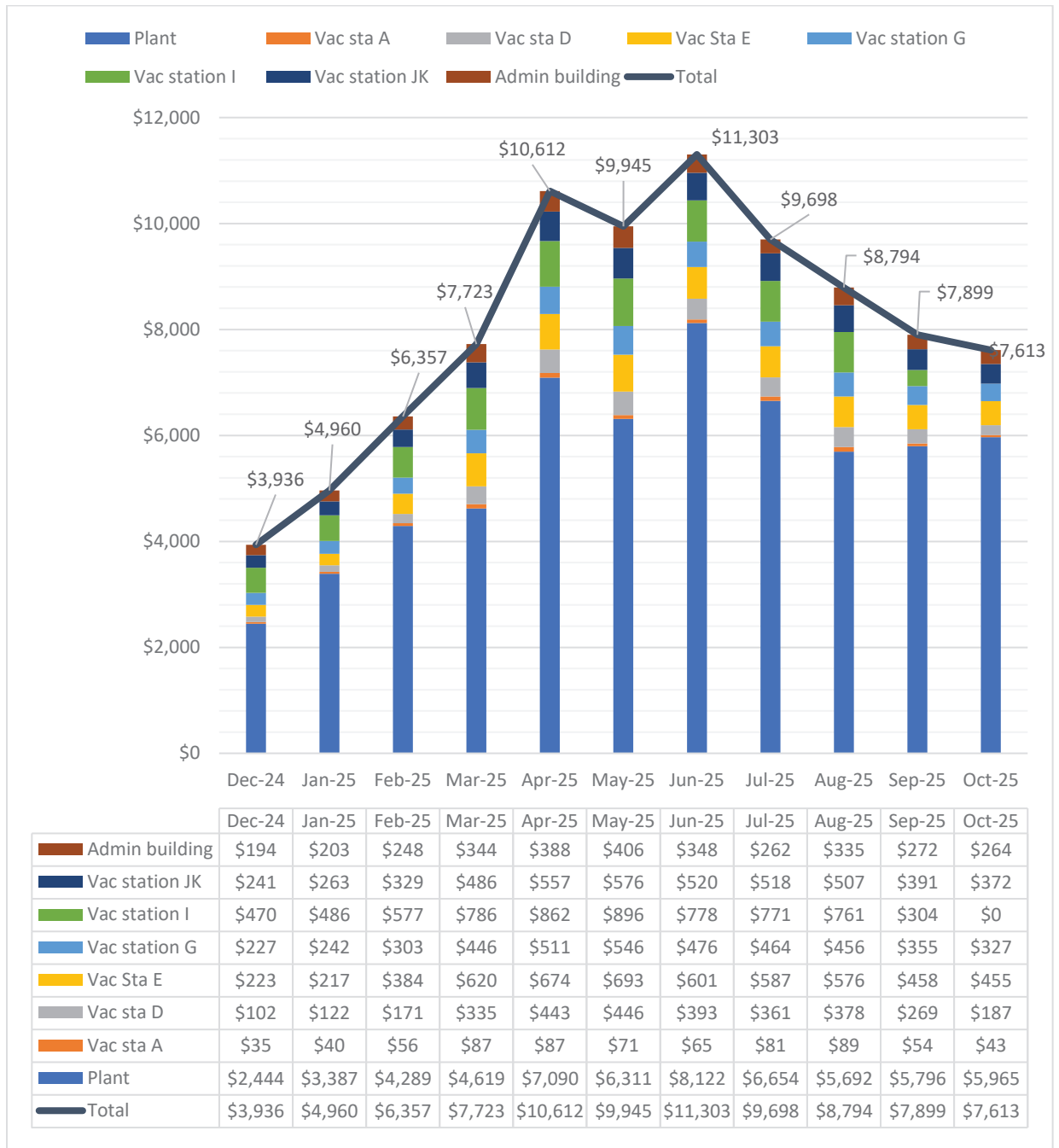
Highest Daily Flow: .907 MGD

Monthly Peak Salinity: 6.2 PPT

Days over 4.0 PPT Salinity: 11

3-month average of Islamorada flow capacity (1.104 MGD): 70%

## Solar Production Report



**Total YTD Production estimate for all sites: \$77,293**

## Vac station I Sewage pump upgrade project



Figure 1: Old pump and rusted pump skid

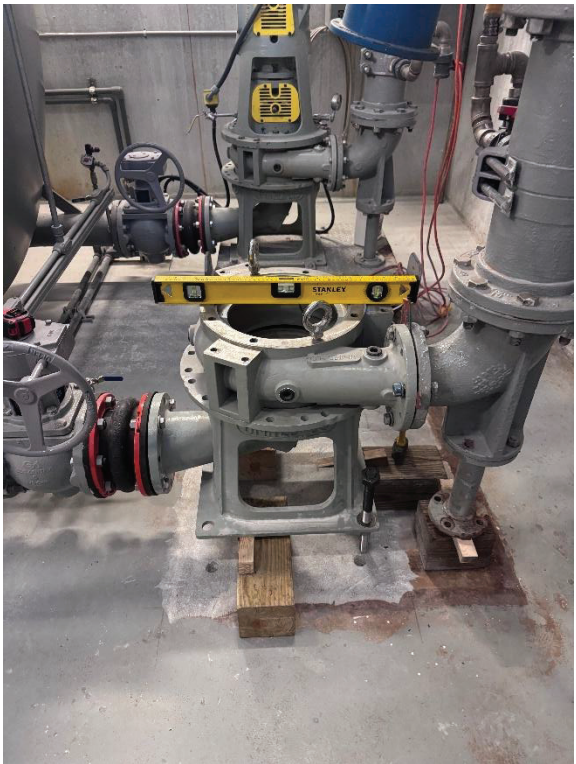


Figure 2: Pump removed and steel skid cutting





Figures 3 and 4: Steel skid removal



Figures 5 and 6: Grout base prep work





Figure 7: Grout pump base formed and poured



Figures 8 and 9: New pump installed, wired and seal water system plumbed.

## Digester gate valve replacement

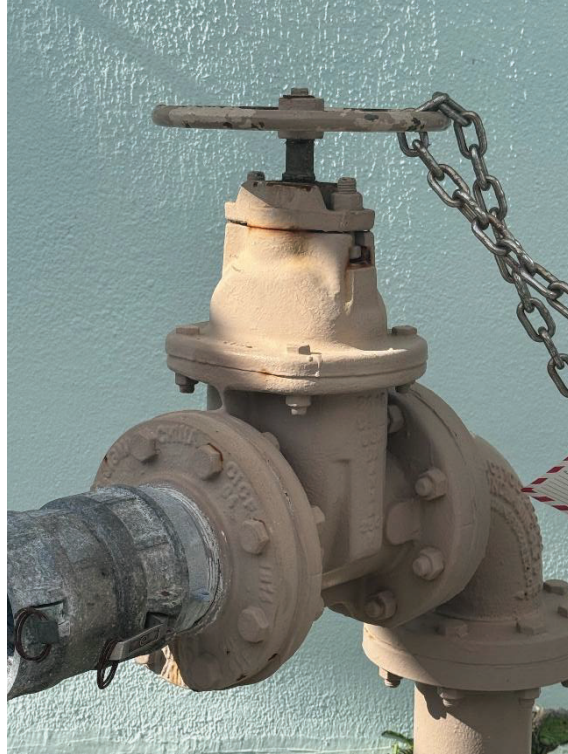


Figure 10: Old seized valve

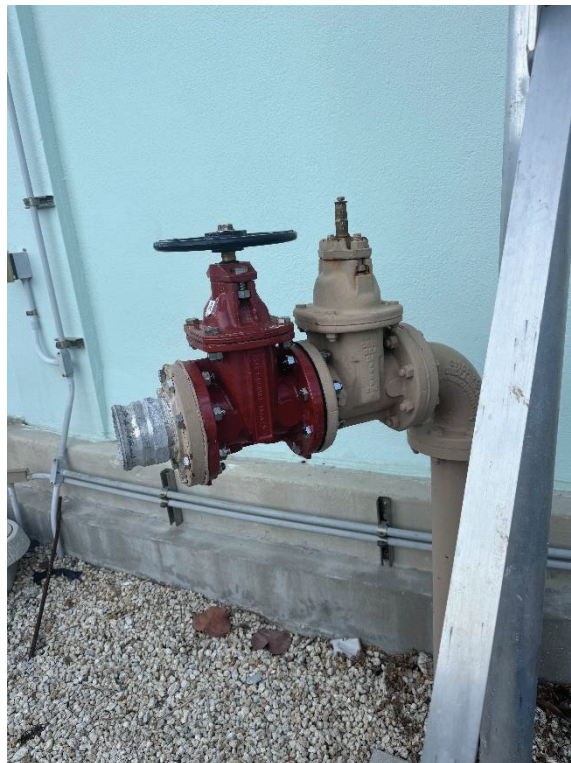


Figure 11: New gate valve installed.