

Key Largo Wastewater Treatment District
Board of Commissioners Meeting
Agenda Item Summary

Meeting Date:
June 3, 2025

Agenda Item Number: L-1

Action Required:
No

Department:
Plant/Facilities

Sponsor:
Ryan Dempsey

Subject:
Plant/Facilities Report - April 2025

Summary:
Mr. Dempsey will present the Plant/Facilities monthly report.

<u>Reviewed / Approved</u>	<u>Financial Impact</u>	<u>Attachments</u>
Operations: _____	\$	1. Monthly Report
Administration: _____		
Finance: _____	Funding Source:	
District Counsel: _____	N/A	
District Clerk: _____	Budgeted:	
Engineering: _____	N/A	

Approved By: _____

General Manager

Date: _____

5-29-25

Wastewater Treatment Plant Operations

The wastewater treatment plant processed an average of 1.9 million gallons of influent per day (MGD). The Treatment Plant remains in compliance with the Florida Department of Environmental Protection (FDEP) guidelines.

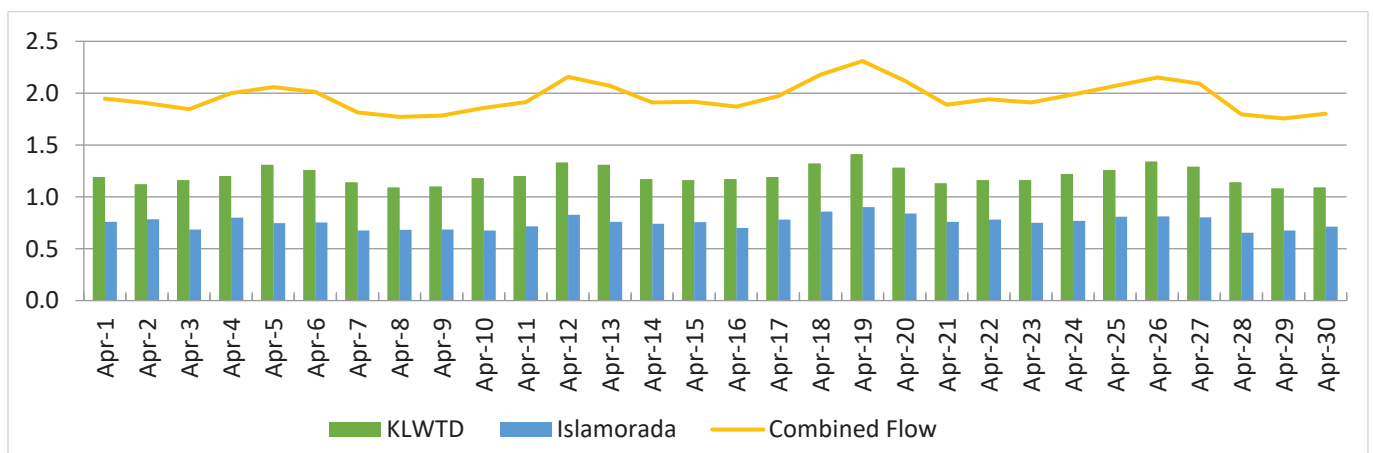
Effluent Quality Reports (mg/L)

Determines the quality of discharge from the wastewater treatment plant.

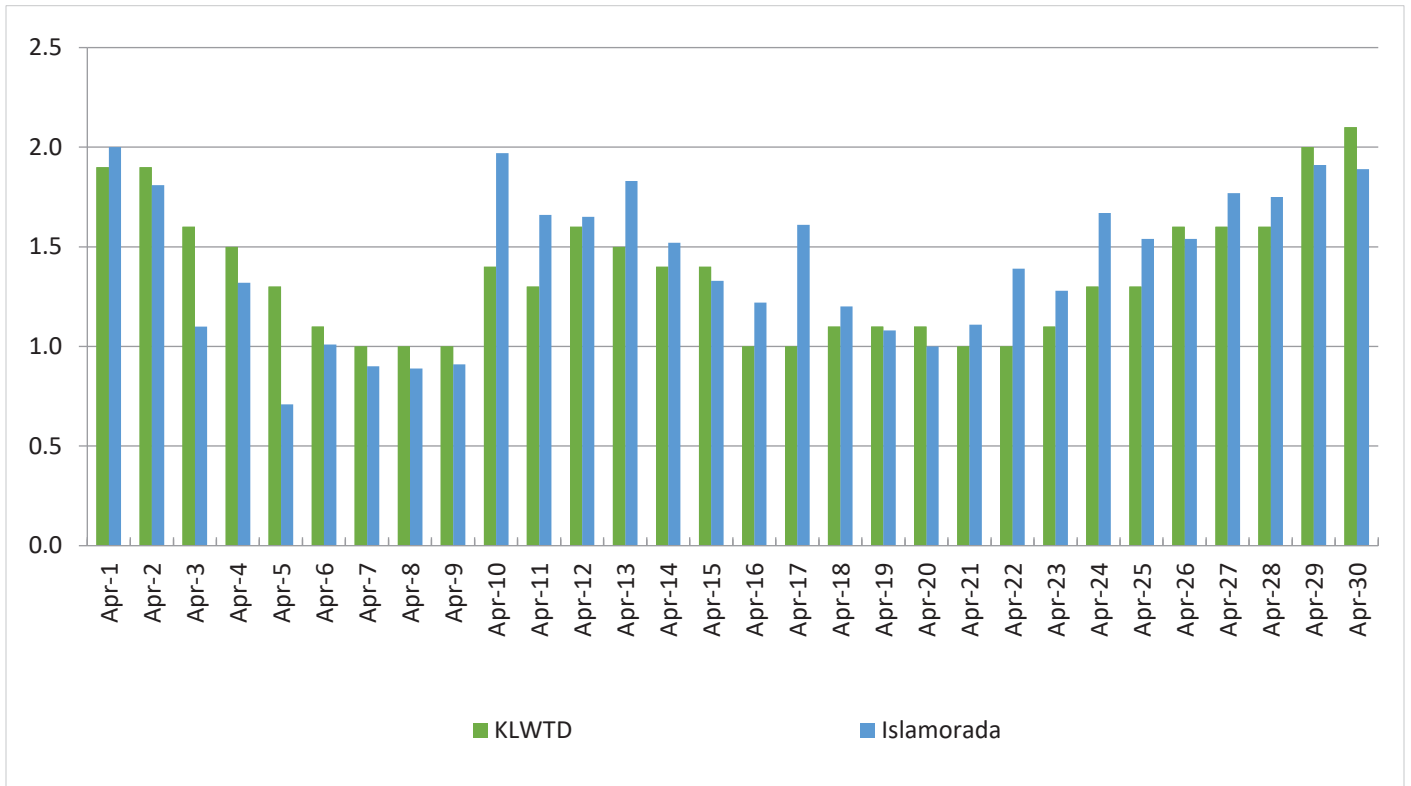
Effluent Quality Report	April 2025 Plant Performance	12 Month Average Plant Performance	Effluent Limits
CBOD5 (Carbonaceous Biochemical Oxygen Demand)	1	1.4	5
TSS (Total Suspended Solids)	1	1.2	5
TN (Total Nitrogen)	3.7	2.7	Report only
TP (Total Phosphorous)	1.2	.7	Report only

Daily Flow (MGD)

The total flow of influent through the wastewater treatment plant each day.



Daily Peak Salinity (PPT)
The daily peak salinity for the current month.



Islamorada

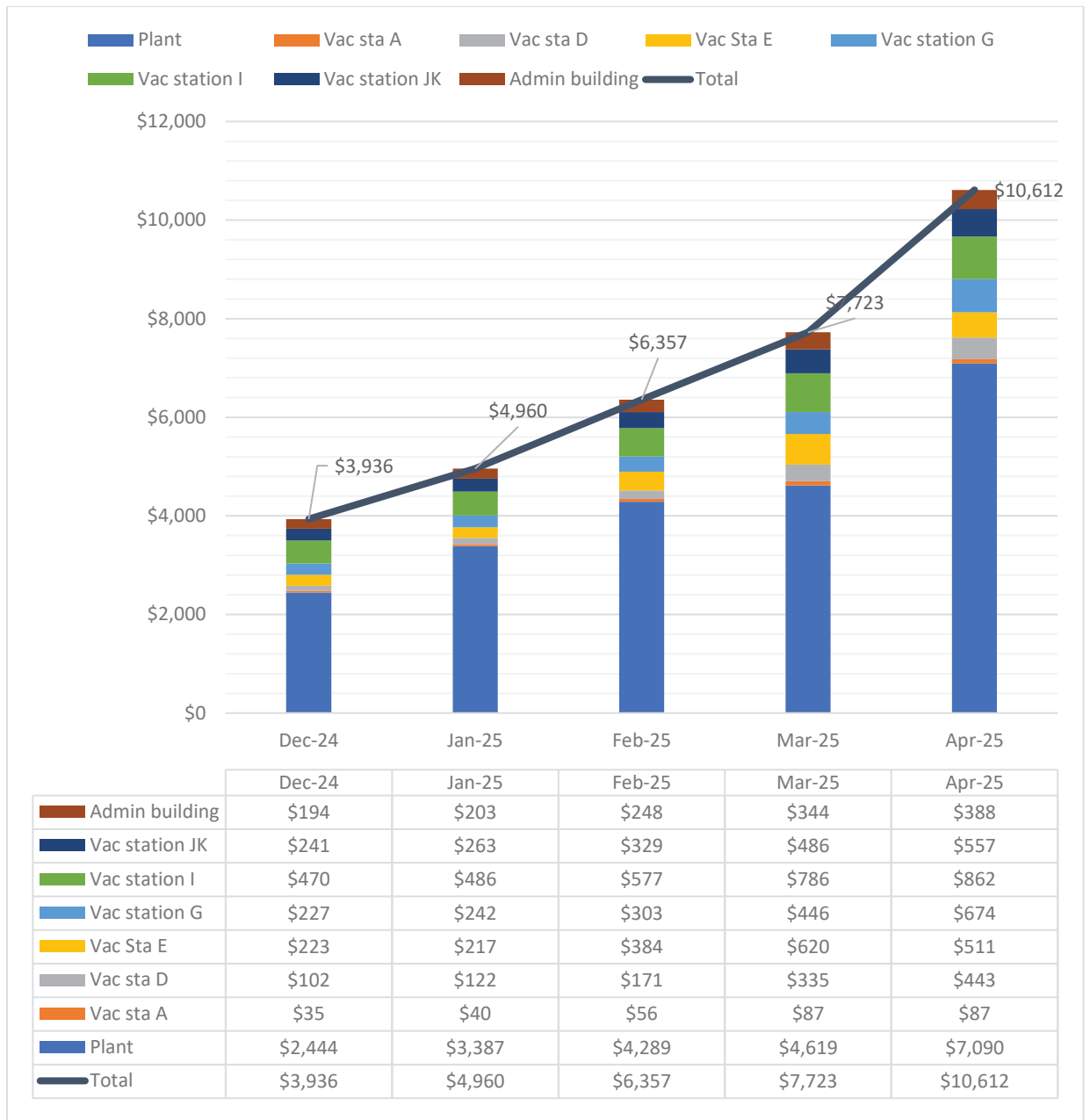
Average Daily Flow: .755 MGD

Highest Daily Flow: .900 MGD

Monthly Peak Salinity: 2.0 PPT

Days over 4.0 PPT Salinity: 0

3-month average of Islamorada flow capacity (1.104 MGD): 68%

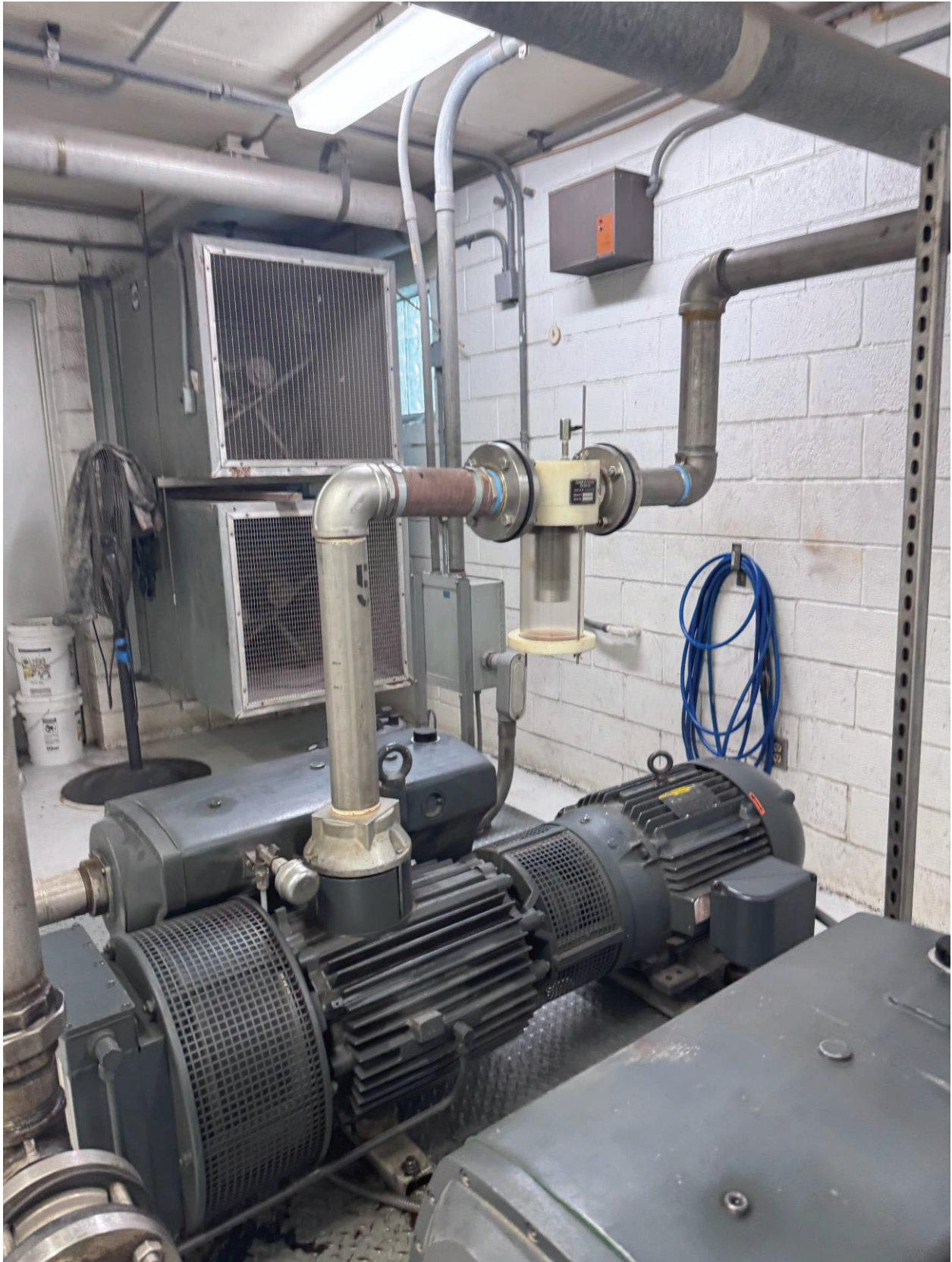


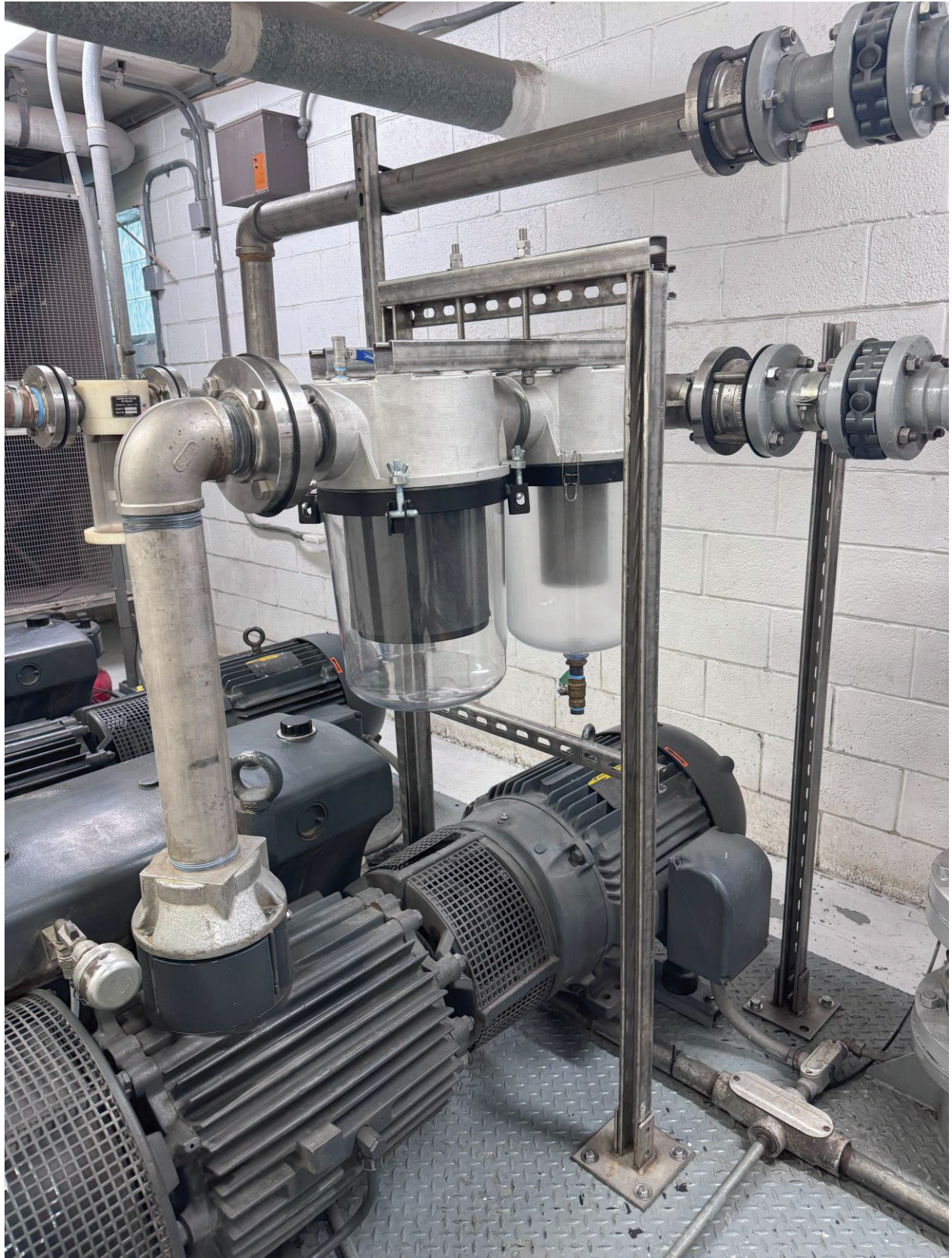
Vacuum tank sight tube and salinity meter project





Vacuum pump filter and moisture separator upgrade





SBR Aeration blower replacement







