

Key Largo Wastewater Treatment District Board of Commissioners Meeting Agenda Item Summary

Meeting Date:
March 18, 2025

Agenda Item Number: L-1

Action Required:
No

Department: Plant/Facilities Sponsor: Ryan Dempsey

Subject:
Plant/Facilities Report - February 2025

Summary:
Mr. Dempsey will present the Plant/Facilities monthly report.

Reviewed / Approved

Financial Impact

Attachments

Operations: _____
Administration: _____
Finance: _____
District Counsel: _____
District Clerk: _____
Engineering: _____

\$

Funding Source:
N/A

Budgeted:
N/A

1. Monthly Report

Approved By:  Date: 3/11/2025
General Manager

Wastewater Treatment Plant Operations

The wastewater treatment plant processed an average of 2.06 million gallons of influent per day (MGD). The Treatment Plant remains in compliance with the Florida Department of Environmental Protection (FDEP) guidelines.

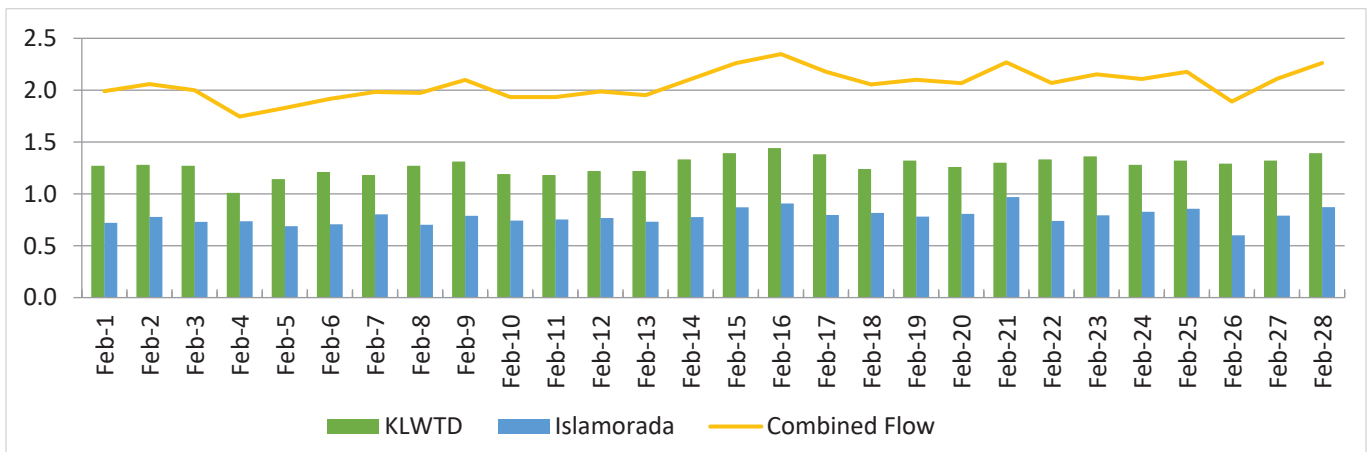
Effluent Quality Reports (mg/L)

Determines the quality of discharge from the wastewater treatment plant.

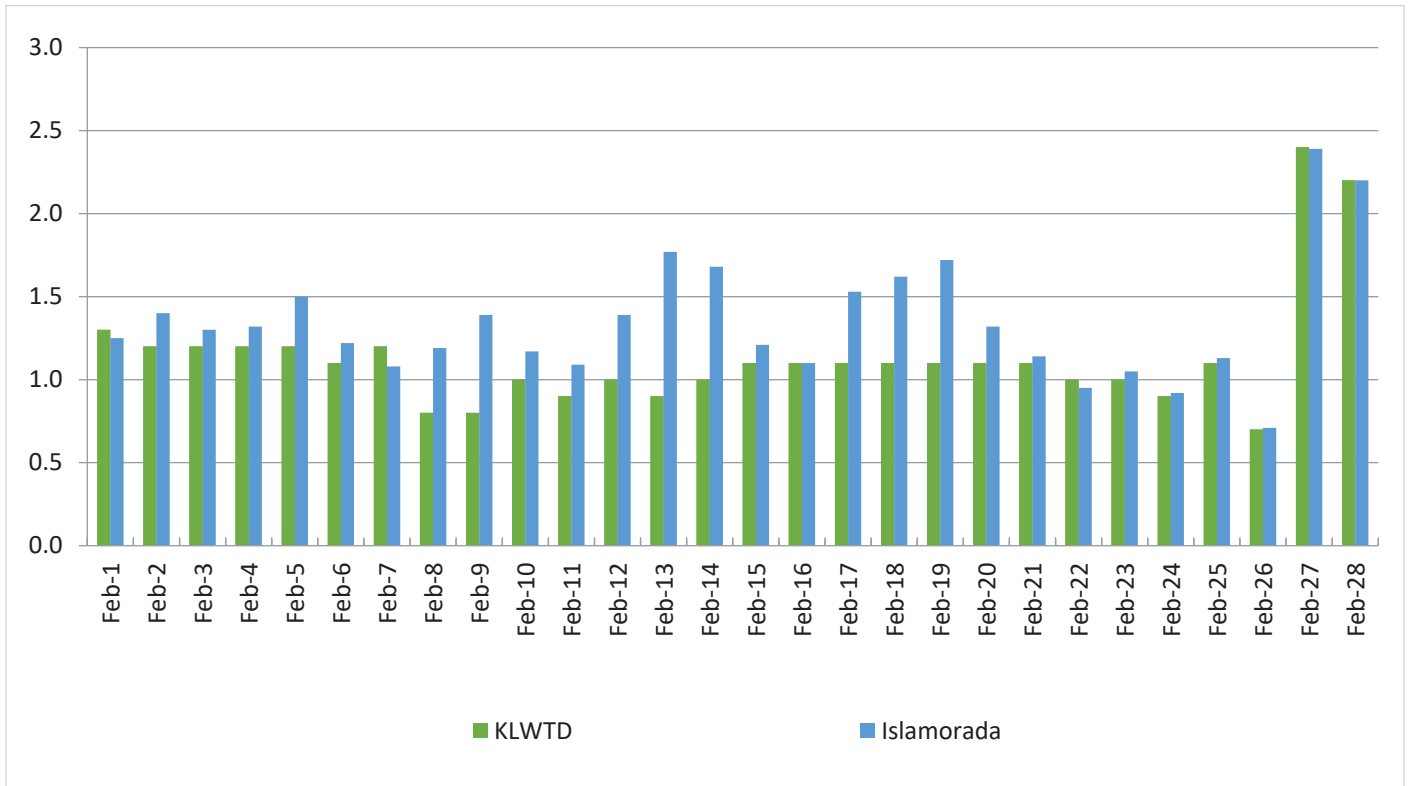
| Effluent Quality Report | February 2025 Plant Performance | 12 Month Average Plant Performance | Effluent Limits |
|--|---------------------------------|------------------------------------|-----------------|
| CBOD5 (Carbonaceous Biochemical Oxygen Demand) | 1.4 | 1.7 | 5 |
| TSS (Total Suspended Solids) | 1.1 | 1.2 | 5 |
| TN (Total Nitrogen) | 3.6 | 2.6 | Report only |
| TP (Total Phosphorous) | .8 | .7 | Report only |

Daily Flow (MGD)

The total flow of influent through the wastewater treatment plant each day.



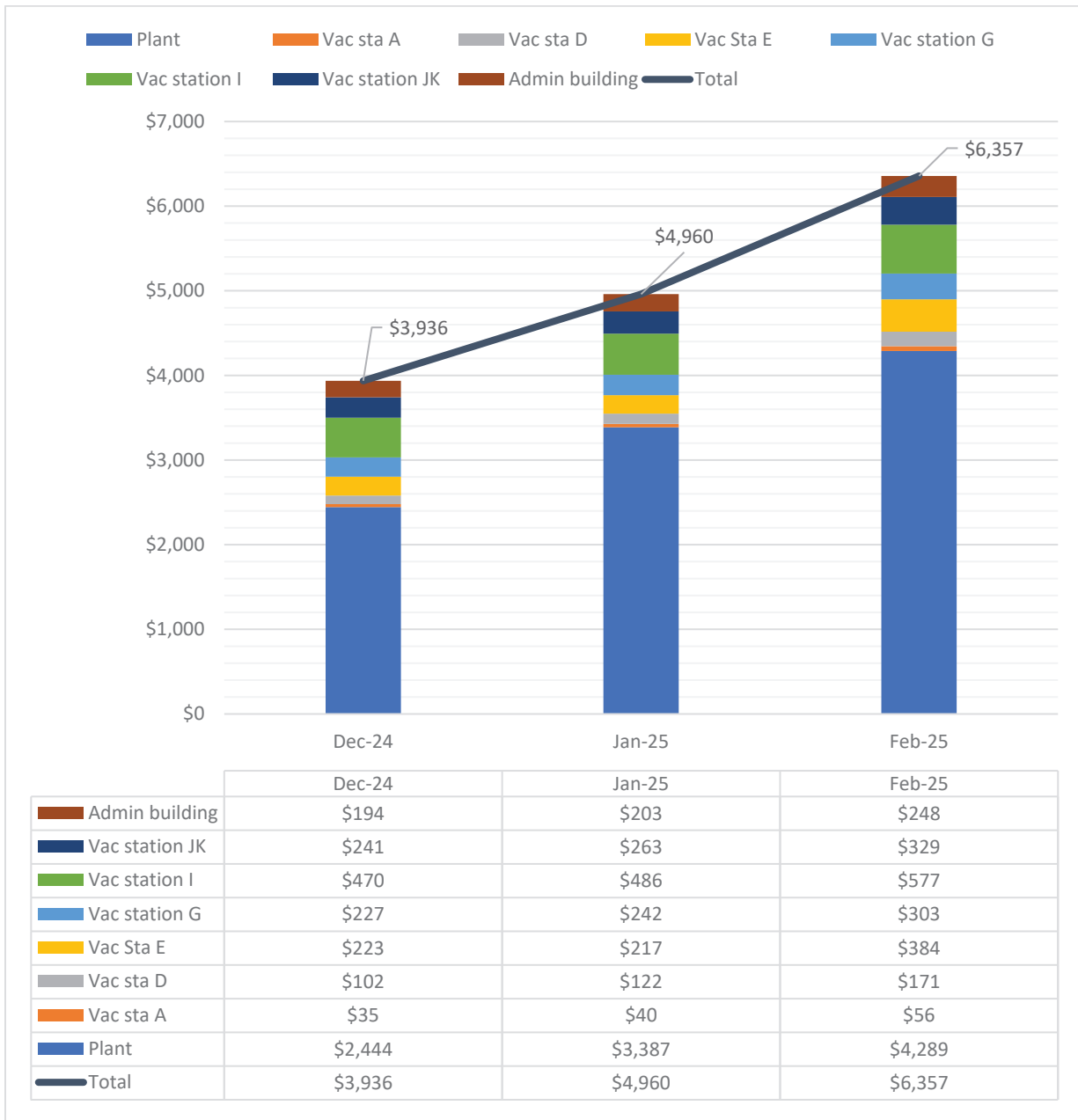
Daily Peak Salinity (PPT)
The daily peak salinity for the current month.



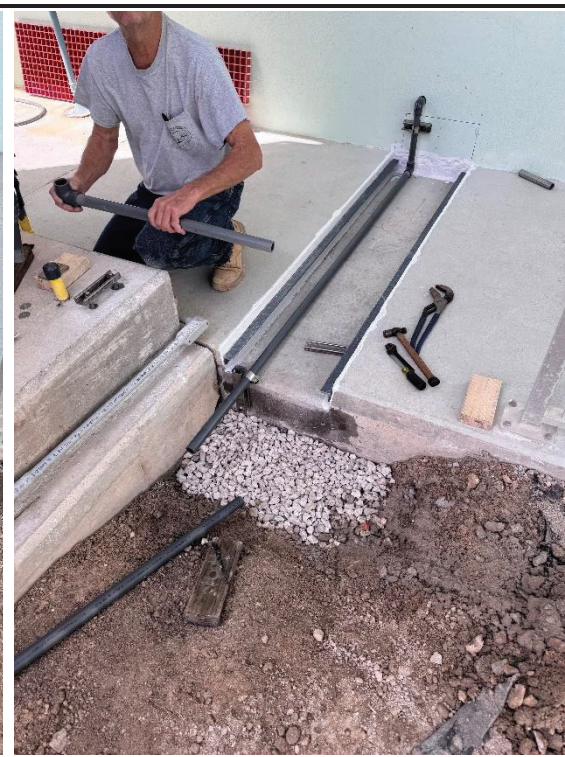
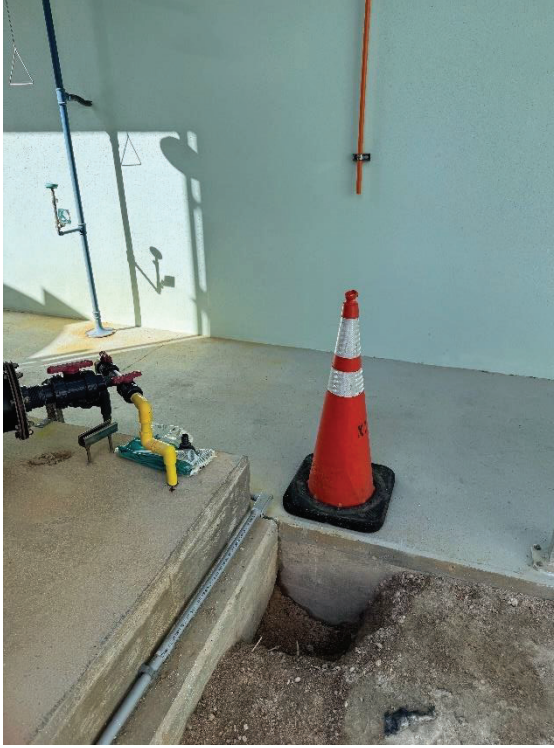
Islamorada

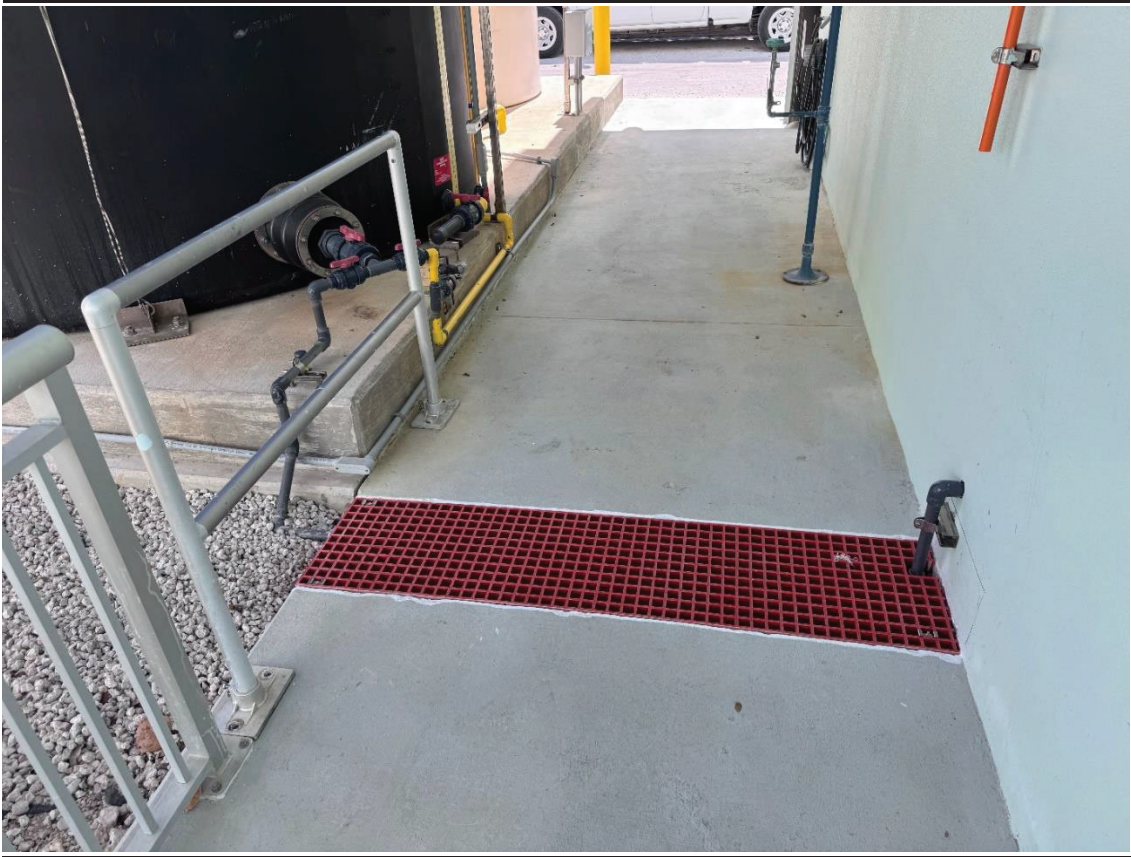
Average Daily Flow: .780 MGD
 Highest Daily Flow: .969 MGD
 Monthly Peak Salinity: 2.4 PPT
 Days over 4.0 PPT Salinity: 0
 3-month average of Islamorada flow capacity (1.104 MGD): 66%

Solar Production Report

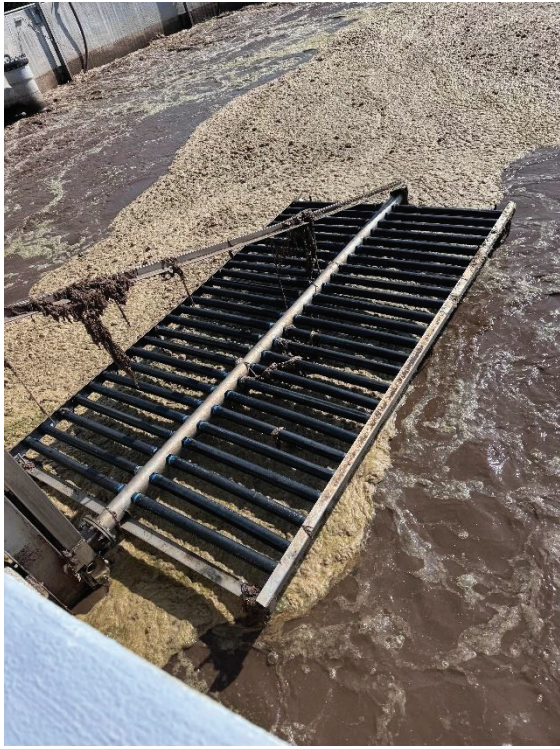


Plant Sodium Hypochlorite piping project





Air diffuser inspection and maintenance



Plant Operations building water piping and ceiling repair

