

# Key Largo Wastewater Treatment District Board of Commissioners Meeting Agenda Item Summary

Meeting Date:  
July 2, 2024

Agenda Item Number: L-1

Action Required:  
No

Department:  
Plant/Facilities

Sponsor:  
Ryan Dempsey

Subject:  
**Plant/Facilities Report - May 2024**

Summary:  
Mr. Dempsey will present the Plant/Facilities monthly report.

**Reviewed / Approved**

**Financial Impact**

**Attachments**

Operations: \_\_\_\_\_  
Administration: \_\_\_\_\_  
Finance: \_\_\_\_\_  
District Counsel: \_\_\_\_\_  
District Clerk: \_\_\_\_\_  
Engineering: \_\_\_\_\_

\$  
  
Funding Source:  
N/A  
  
Budgeted:  
N/A

1. Monthly Report
2. Emergency Vacuum Trailer Project Update

Approved By:  Date: 6/27/2024  
General Manager

# Wastewater Treatment Plant Operations

The wastewater treatment plant processed an average of 1.94 million gallons of influent per day (MGD). The Treatment Plant remains in compliance with the Florida Department of Environmental Protection (FDEP) guidelines.

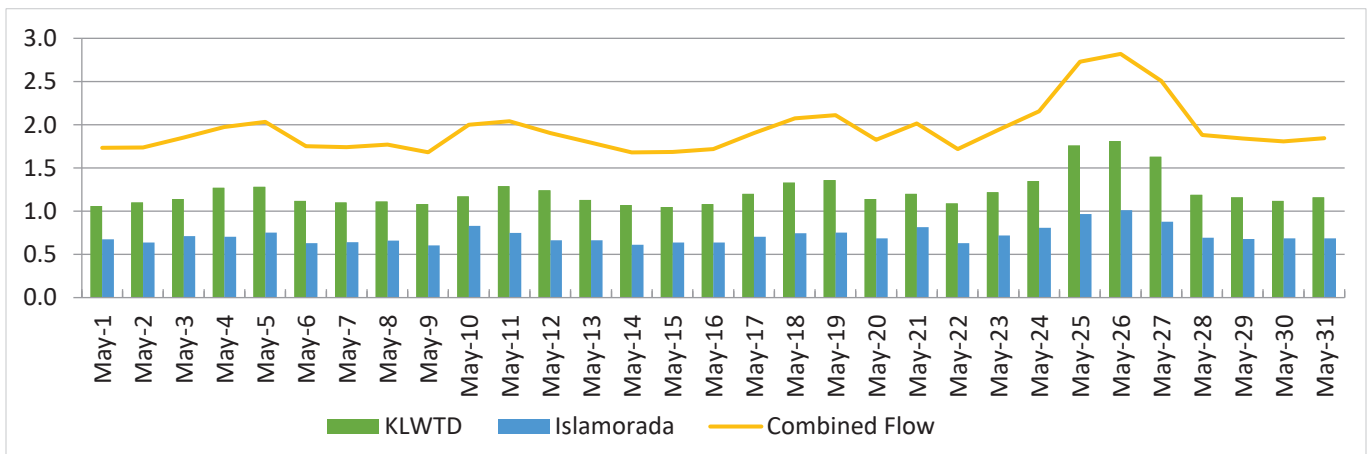
## Effluent Quality Reports (mg/L)

Determines the quality of discharge from the wastewater treatment plant.

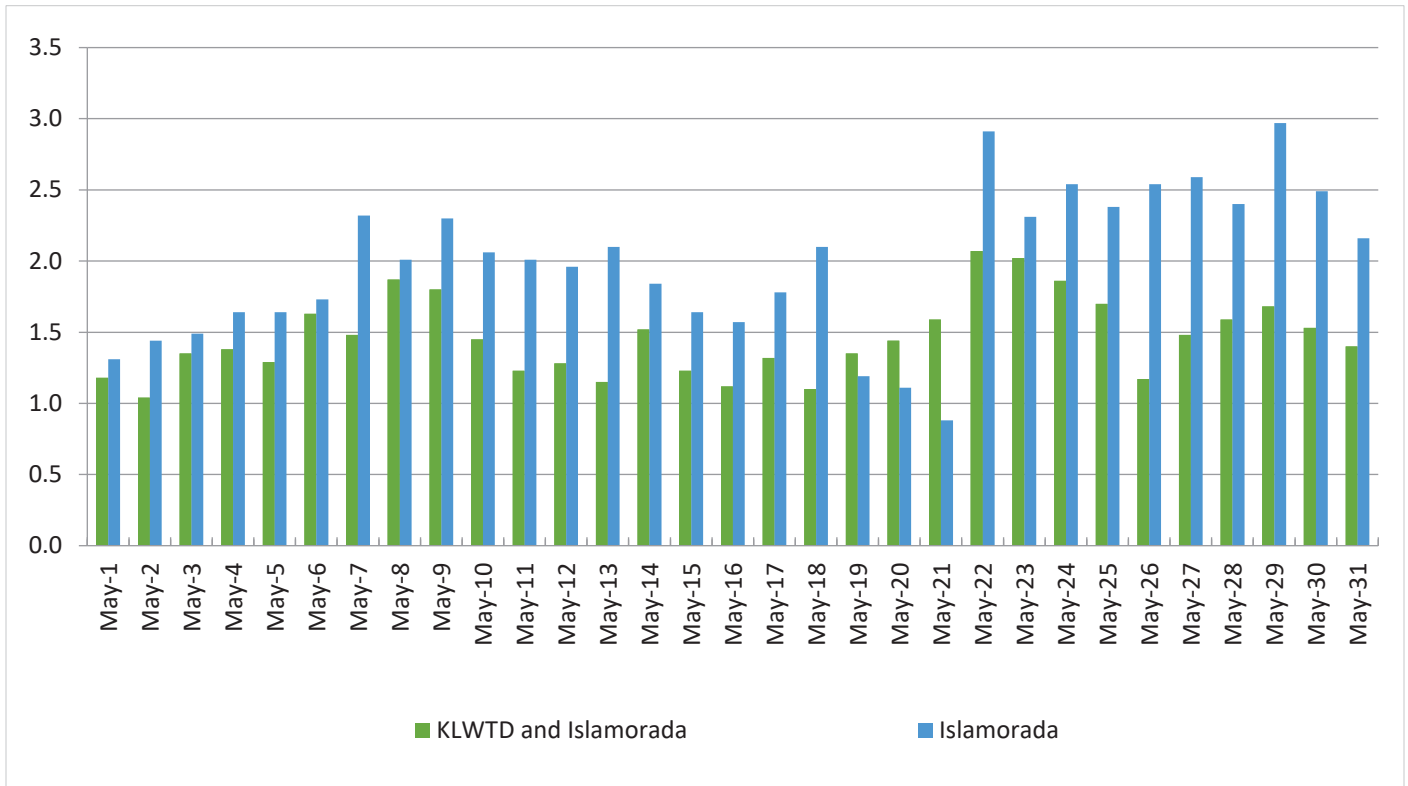
Effluent Quality Report	May 2024 Plant Performance	12 Month Average Plant Performance	Effluent Limits
<b>CBOD5</b> (Carbonaceous Biochemical Oxygen Demand)	2.3	1.6	5
<b>TSS</b> (Total Suspended Solids)	1	1.3	5
<b>TN</b> (Total Nitrogen)	2.2	2.4	Report only
<b>TP</b> (Total Phosphorous)	.8	.7	Report only

## Daily Flow (MGD)

The total flow of influent through the wastewater treatment plant each day.



**Daily Peak Salinity (PPT)**  
The daily peak salinity for the current month.



**Islamorada**

Average Daily Flow: .716 MGD  
 Highest Daily Flow: 1.01 MGD  
 Monthly Peak Salinity: 3.0 PPT  
 Days over 4.0 PPT Salinity: 0  
 3-month average of Islamorada flow capacity (1.104 MGD): 67%

## Emergency vacuum trailer project update

All of the Vacuum pump power and control conduit and wiring has been rerouted between the control panel and pumps.



Figure 1: Emergency vacuum trailer side view.



Figure 2: Emergency vacuum trailer front view. Power and control receptacles have been mounted and conduit has been installed.

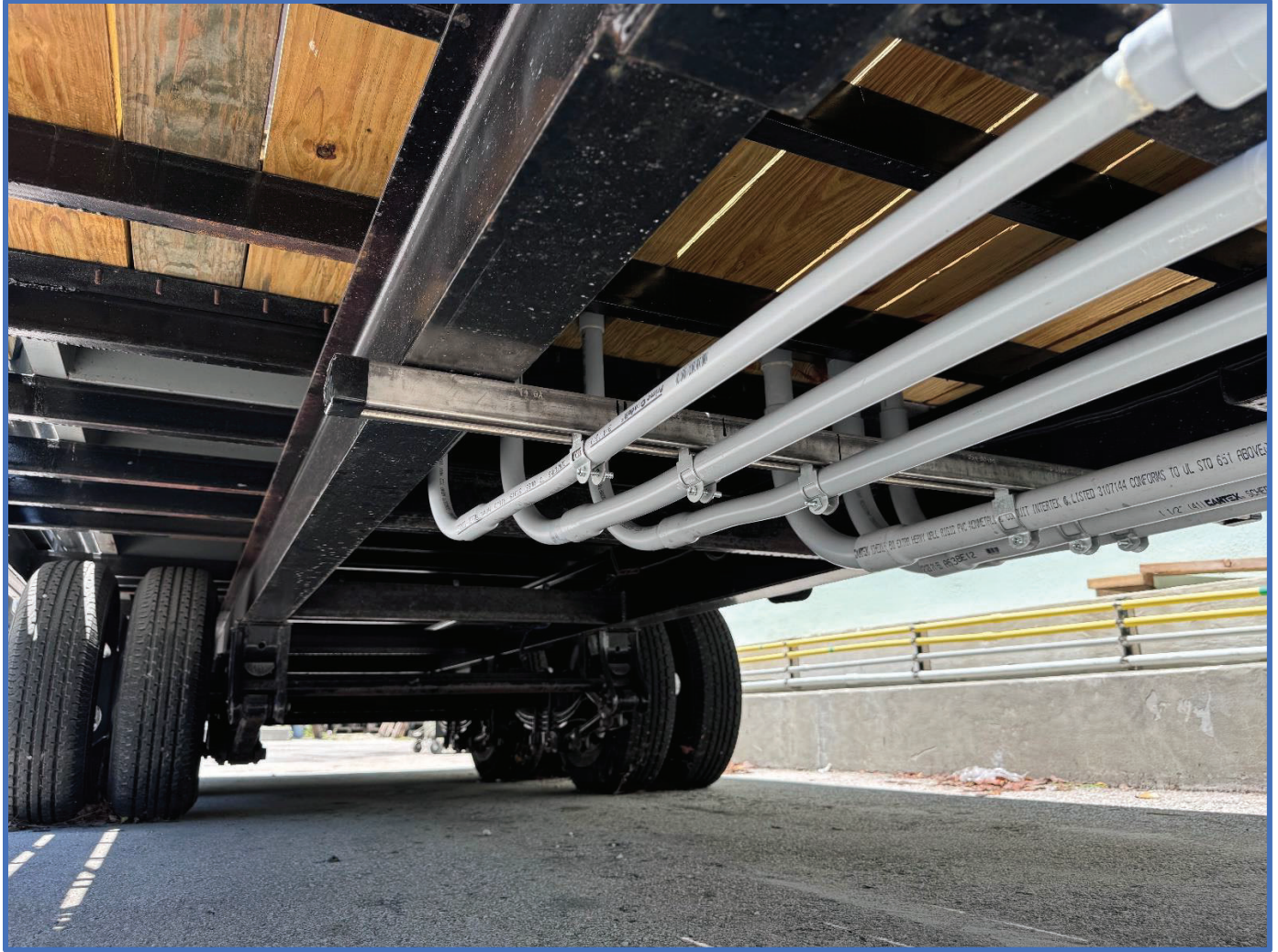


Figure 3: Emergency vacuum trailer conduit



Figure 4: Overhead conduit